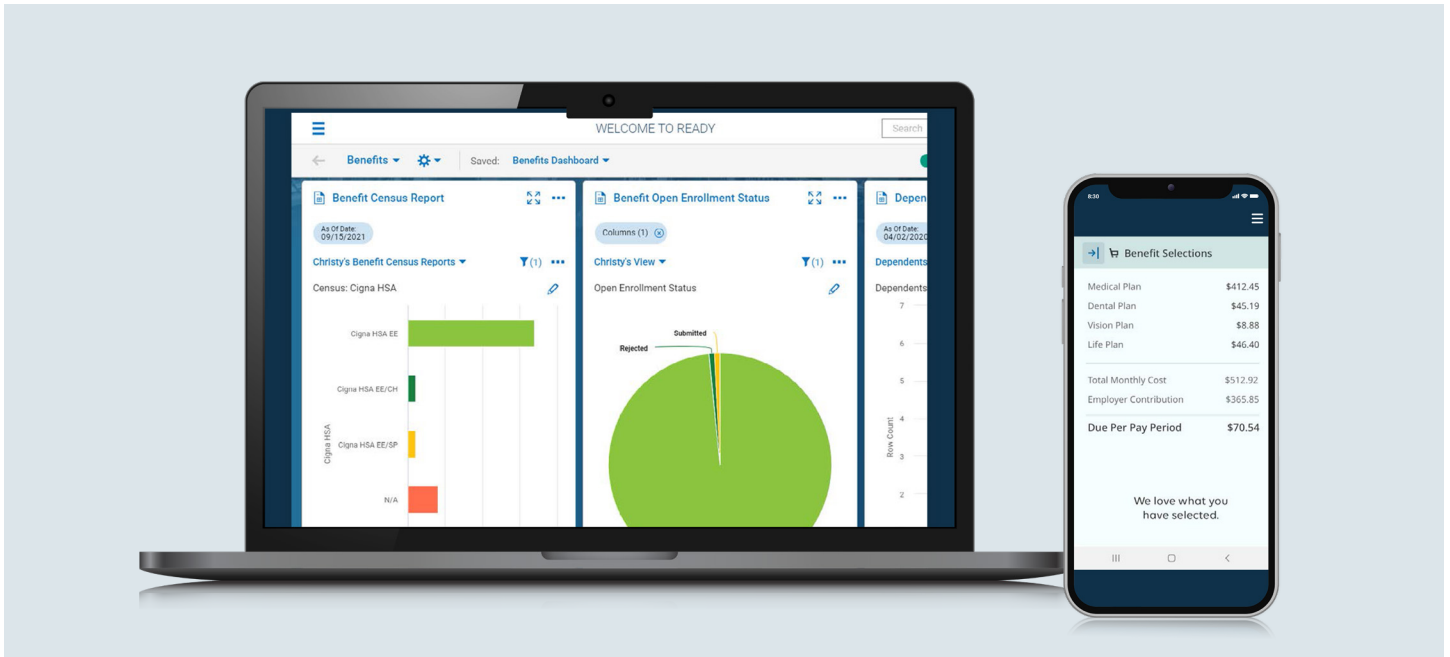


## Optimized Benefits Management for You and Your Workforce.

Organizations face overwhelming complexity in benefits administration, leading to employee frustration and errors due to disjointed processes and a lack of user-friendly, mobile-friendly enrollment options. Benefits empowers you to effectively manage the complexities of benefits administration with a tailored solution designed for you and your team.



### How it Works

With Benefits, easily plan, set up and administer your benefit offerings in one centralized platform, ensuring secure and automatic delivery of enrollment and benefits data to carriers during open enrollments and life events. Plus, it provides an engaging, mobile-friendly enrollment experience, allowing employees to manage their selections from anywhere and make the best choices for their families.

### Benefits For HR Professionals

- Gain instant, anytime access to the tools needed to easily plan, set up and administer benefits in one place.
- Ensure information is reviewed and approved by the right people at the right time through automated workflows.
- Easily communicate important benefits information to employees.
- Automatically and securely update carriers with changes.
- Eliminate manual key-in enrollments on carrier sites.
- Gain real-time visibility into key metrics and trends with the benefits dashboard.
- Make smarter, data-driven decisions about your people and your business.
- Reduce the risk of noncompliance by tracking COBRA-qualifying events and eligibility.

## Benefits For Employees

- Receive notifications and alerts when it's time to review or enroll in benefits.
- Easily review, select and manage benefits anywhere and on any device.
- Compare plans to understand coverage as well as contribution amounts to ensure you select the best option for you and your family.
- Review and sign off on your benefits.

## Features

- Comprehensive plan rules for eligibility, waiting periods, age and banding to ensure your policies are enforced
- Effective dated plans to eliminate manual date-based changes
- Coverage levels based on pricing or units
- Evidence of Insurability settings for open enrollment, new hire, and life change events
- Passive enrollment option for automatic enrollment in the same benefits
- Premium surcharges capabilities
- Automated enforcement of court-ordered dependent coverage
- Customizable electronic forms for the collection of additional plan data
- Automated notifications to easily communicate to targeted employee populations
- Easy-to-use workflows to automate review and approval processes
- Automated connections to 600+ carriers, financial partners, and COBRA administrators
- Smart Forms, used when EDI files are not accepted
- Proactive, continuous data monitoring for data updates or changes
- Over a dozen real-time, benefits-specific reports that allow you to get a full picture of plan effectiveness at any time
- Benefits dashboard for visual insights and trends
- Employee self-service, including reviewing and enrolling in benefits, comparing benefits, understanding contribution amounts, and updating personal information

Benefits provides a customizable, comprehensive approach to employee development, ensuring alignment with your specific goals. For a demo or more information, contact us at [myworkforcego.com/contact](https://myworkforcego.com/contact).